



2022 REPORT

Austin Aspires - **Austin**

Cradle 2 Career - **Rochester**

Generation Next - **Twin Cities**

Northfield Promise - **Northfield**

Northside Achievement Zone - **Minneapolis**

Children First/Park Partnership for Success - **St. Louis Park**

RiseUp Red Wing - **Red Wing**

Saint Paul Promise Neighborhood - **Saint Paul**

United Way of Central Minnesota - **Saint Cloud Area**



About The Education Partnerships Coalition

Vision Statement

Our children succeed in school and in life. Our communities thrive. Our state is equitable and prosperous for ALL.

Mission Statement

The Education Partnerships Coalition is uniting Minnesota cradle-to-career community initiatives to ensure all children and youth succeed.

The Education Partnerships Coalition (EPC) engages more than 120,000 youth and their families across Minnesota.

Coalition members take a birth-to-career approach to eliminating Minnesota's worst-in-the-nation opportunity gaps. All Coalition members are locally-controlled, data-driven public-private partnerships. This collective impact focus brings communities together to enact solutions that improve outcomes for children and families. Additionally, all EPC members are affiliated with either the Promise Neighborhood Institute or StriveTogether, the leading national collective impact networks.

We invite you to join us in the critically important work of eliminating Minnesota's opportunity gaps and ensuring all families have the ability to succeed.

To discuss how we can collaborate, please contact:

- Alysen Nesse at anese@hyldenlaw.com
- Isabella Rojas at irojas@hyldenlaw.com
- Molly Barrett at molly@gennextmsp.org

StriveTogether



Executive Summary

In communities across Minnesota, partners are collaborating based on the belief that, together, we can achieve more than we can alone. The place-based partnerships comprising the EPC are joined in the commitment to ensuring every young person has the opportunity to flourish. As the COVID-19 pandemic brought inequities some of our children and families face to the forefront, coalition members used data-driven and evidence-based approaches to close gaps and create innovative programs and partnerships.

In 2022, EPC partners were there for their communities: From creating summer reading programs to combat summer slide; to engaging parents and families in their language of origin to ensure more voices are heard and valued; to supporting the holistic needs of all students through group therapy and social-emotional initiatives. Funding streams, policy shifts, and resource allocations have all made measurable improvements in the data – and, beyond data points, in young peoples’ lives.

While this report celebrates the progress these communities have achieved through collective impact, it also serves as a reminder of the work that still lies ahead. With sustained support from decision-makers across Minnesota, thousands more children and youth can access opportunities to achieve their full potential. More families will feel valued and included in the work happening in their communities. And more communities throughout the state – particularly those who have been historically marginalized – can thrive.



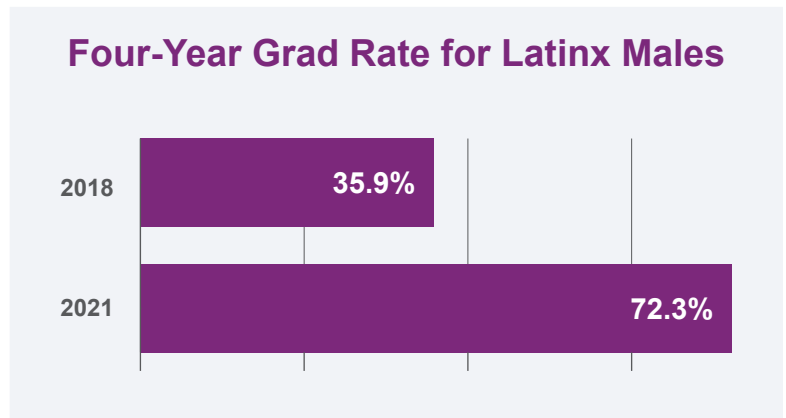


About Austin Aspires

Austin Aspires has worked to ensure that Austin will be recognized as a leader in Minnesota education with a culture of educational excellence, supporting individuals from cradle to career by being embraced in every aspect of the community. Using the collective impact model, Aspires brings together 50 community partners to serve the needs of children and families in the Austin community.

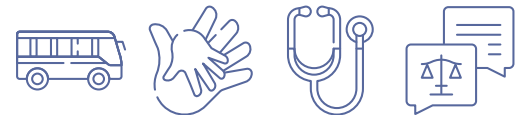
Academic Supports

The four-year graduation rate of Hispanic males was 35.9% in 2018. In 2021, the rate was 72.3%. Using dollars from the State of Minnesota, Aspires started the Aspiring Leaders of Tomorrow (A.L.O.T) program. Staff in this program intentionally work to build relationships with Hispanic males and their families to remove obstacles to graduation. In addition to academic support through tutoring, this program also supports the learners' social-emotional and physical health. Since 2019, the Hispanic male graduation rates for Austin Public Schools have been higher than the state average for this population.



Additionally, State dollars were used to fund a tutoring program, Boys of Tomorrow summer programming for the youth in Austin, and SAT/ACT prep sessions for scholars in need.

800+ Families



Parent Engagement

The extremely important role of parent/caregiver continued to be even more important during 2022. Austin Aspires and community partners worked to ensure that wraparound support was provided to the parents, allowing parents to be better equipped to engage with and advocate on behalf of their children. From January through October 2022, Aspires' staff worked closely with over **800 families** to provide access to food support, legal support, transportation services, childcare, medical services, and more.

Mental Health & Social-Emotional Supports

Austin Public Schools, in relationship with Nexxus-Gerrard Family Healing, provide mental health support and counseling to students during the school day. Aspires learned that the counseling completely stopped during the summer. Students and families expressed concerns about this, so during the summer of 2022, Austin Aspires worked with community partners to ensure these services could continue. Forty-two students received services this past summer who had not been supported previously. Working with Austin Public Schools and Mower County, Nexxus-Gerrard and Austin Aspires secured therapists, locations, and transportation as needed to ensure ongoing, consistent support for the students. Using lessons learned from last summer, plans are underway for the summer of 2023, and Aspires anticipates greater participation.



Provided mental health services to 42 students during the summer of 2022



As one parent wrote about an Aspires staff member:

“MaKayla was right there from the beginning. Since getting my referral, she has been there every day for myself and my children. She is very resourceful and knowledgeable in knowing what is available to me and my family to help us. She is very understanding, not only of my needs, but of my children’s needs. She does it without judgment, treats us as family, and is always there to help or find a way to get myself or children help.”

Encouraging Scholars

Austin Aspires works hard to encourage scholars to “open as many doors as possible” for their future, so the choice can be theirs. This includes being ready to attend a two-year or four-year college if that is what is determined to make the most sense for their career goals.

Many institutes of higher education consider a composite score of 18 or higher on the ACT “college ready.” In 2018, 7.7% seniors who identified as Asian had a composite score of 18 or higher on the ACT. Aspires worked with students in this demographic through targeted programming, and by 2022, the number increased to 45.5% of the students identifying as Asian in the class of 2022 had a composite score of 18 or higher.

Students Who Identify as Asian Scoring Composite Score of 18 or Higher on ACT





About Cradle 2 Career

Cradle 2 Career (C2C) is a community-wide, community-owned initiative that works to ensure that all children and youth in Rochester succeed from cradle to career through shared purpose, alignment, and accountability among community partners. As a member of the national StriveTogether network, C2C uses a theory of action to create systemic change in the community to better the lives of children and their families.

Academic Supports

- C2C created a summer programming pilot with two cohorts of students to address the critical 8th-to-9th grade transition.
- C2C launched the Bridge Pilot with a homeroom of 9th grade students to address 8th-to-9th grade transition. Based on student feedback, C2C invites partners once weekly to discuss topics prioritized by the students, such as postsecondary enrollment options, credit accumulation, course selection, and extracurricular opportunities.

Parent Engagement

- Through the C2C Whole Family Systems partnership, partners are providing technology and technology tutoring to families across Rochester and Winona. In the coming months, C2C will add implementation sites and student-focused elements, such as practicing social-emotional skills in the home and reading with children.
- The Cradle 2 Career Parent Council has been meeting regularly since the fall of 2021. Parent representatives from communities within Rochester come together to set the advocacy agenda for the year, partner with the networks to co-design strategies, and advise the organization on the barriers they and their children are facing that interrupt or disrupt children's academic pursuits.





Mental Health & Social-Emotional Supports

C2C launched a Kindergarten Readiness Cards pilot to address kindergarten transition. The partnership distributed around 400 cards in English, Arabic, Somali, and Spanish to parents through network partners and back-to-school events. These cards include activities that parents can do in their home to support their children in reaching developmental milestones before the age of five.

Cultural Competencies Training

The partnership's Cultural Competency pilot adds to cultural competence of youth-serving organizations. C2C offered its first three-hour training session in cultural competency. These trainings are tailored to competency needs identified by C2C's high school graduation network with input from network members, students, and from responses to the Culturally Responsive Program Management Self-Efficacy tool. Forty participants attended the first session, including youth-serving professionals, school resource officers, youth organizations staff, and Cradle 2 Career Leadership Table members and staff. (See infographic on previous page for an example.)

Network Lifecycle

Cradle 2 Career's networks, conveners, leadership table, and parent council determined there was a need to map the partnership's strategy process at the network level. There was a desire to identify both process and groups involved in the process of starting at a Results Based Accountability Turn the Curve and mapping the partnership's collective work all the way to evaluation and scalability. C2C is in year one of taking this lifecycle process and making it actionable.





About Generation Next

Generation Next impacts over 75,000 students through direct engagement with both superintendents from Minneapolis Public Schools and Saint Paul Public Schools. The only cradle-to-career backbone organization addressing systemic disparities across the Twin Cities, Generation Next convenes a coalition of local cross-sector partners to create collective impact that aims to close the opportunity and achievement gaps facing students of color and lower-income students.

Academic Supports

Generation Next partnered with Ignite Afterschool (Minnesota’s Out-of-School Time Provider Network) and Greater Twin Cities United Way on the **Equitable Learning Recovery project** to understand accomplishments, challenges, and new learnings from initial waves of COVID relief funding. The project reached across the state with a focus in eight local communities, with Generation Next as the lead partner in Minneapolis and Saint Paul.

Generation Next and partners gathered community members to discuss the findings and recommendations. **For more, see the full report on the Generation Next website: gennextmsp.org/elr_report**

Engagement

In 2022, Generation Next launched Project Teams to take action in three priority areas.



Early Childhood Quality & Access

Objective: Increase the capacity of quality early childhood programs and improve access for BIPOC families.

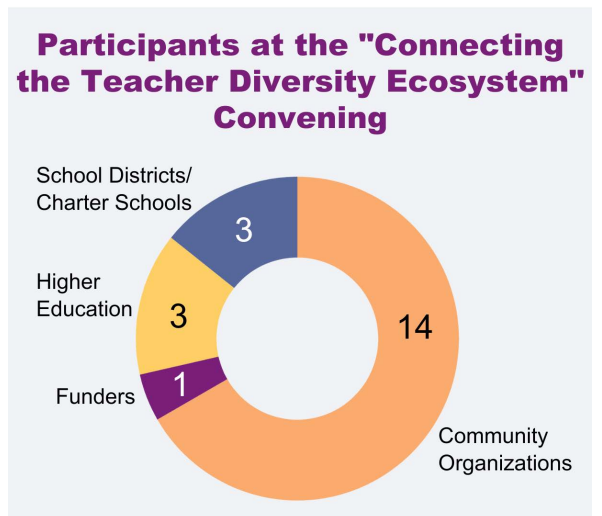
The Early Childhood Project Team developed a framework and rationale for policies built on shared experience through past Generation Next initiatives: to establish an Office of Early Learning; to transform the Child Care Assistance Program; and to modernize program administration through new technology. Read more at <https://www.minnpost.com/community-voices/2022/04/greater-investment-needed-in-early-childhood-education/>.



Teacher Diversity & Teaching Diverse Learners

Objective: Work collaboratively to implement new or scale existing strategies to reduce barriers to entering and remaining in the teaching profession encountered by BIPOC communities.

The Teacher Diversity Project Team hosted an in-person convening: “Connecting the Teacher Diversity Ecosystem in Minneapolis & St. Paul.” Generation Next gathered local leaders to advance Teacher Diversity by connecting community-based, K-12, and Teacher Preparation Program networks and leaders.





Postsecondary Preparation & Persistence

Objective: Work collaboratively to implement new or scale existing strategies to expand access to postsecondary preparation programs for BIPOC students in Minneapolis Public Schools and Saint Paul Public Schools.

By leading postsecondary transitions conversations with staff at Minneapolis College and St. Paul College, the partnership has connected leaders and learning between them and practice, policy, and funding leaders in Generation Next’s Leadership Council. These community colleges enroll the largest percent of graduates from local K-12 districts. Minneapolis College has focused efforts on Black male student achievement. Saint Paul College has focused efforts toward innovation in developmental education pedagogy and co-requisite courses.

Mental Health & Social-Emotional Supports

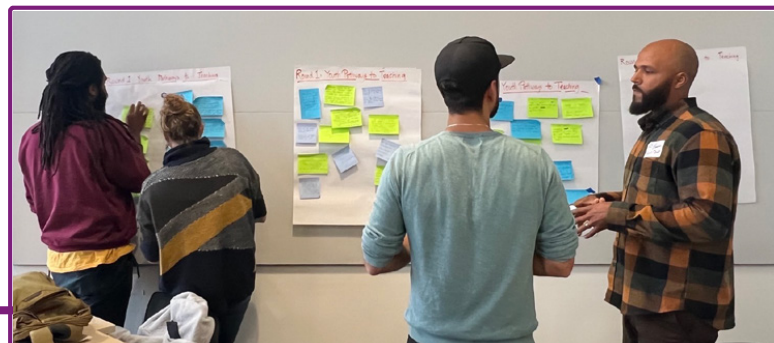
Through the Equitable Learning Recovery Project, Generation Next asked school and community leaders about the top areas where young people needed support. Mental health and well-being were most commonly identified, followed by social connection, basic needs, and social-emotional learning.

The statewide survey also explored to what extent youth needs were prioritized and met through recovery efforts in the summer of 2021. The majority of respondents (73%) agreed or strongly agreed that young people’s social-emotional needs were met; 67% agreed or strongly agreed that their well-being and mental health needs were met.

Five of seven communities identified “mental health” and “social connections” as needs, more so than they did “academics.”



**For the latest outcomes data, visit interactive dashboards at gennextmsp.org/data.*



About Northfield Promise

Northfield Promise is a community movement to enable all Northfield children to thrive, from cradle to career. Formed in 2012, it connects and aligns resources, programs, and institutions to achieve community-level change in Northfield by collaborating toward 10 benchmarks – academic, social, and emotional – throughout each child’s life.

Academic Supports

- Northfield Promise supports two bilingual Early Childhood Navigators who work with local families to connect them and their children to preschool, other early childhood programs, and screening. During the grant year, 93% of the incoming kindergartners had attended high-quality preschool or childcare programs outside of their homes, an increase from 81% of kindergartners the prior year.
- Northfield Promise distributed 10,939 books to local children through free community bookshelves and the BookBike this grant year.
- A flagship Northfield Promise initiative, the Northfield Community College Collaborative (NCCC) supported 85 students in taking 246 in-person and online community college classes and earning 989 college credits. The NCCC provides students with academic advising, tutoring, career planning assistance, and financial aid support. In 2021-22, 95% of participating students were first-generation college attendees, 83% were students of color, and 87% were from low-income families.

Parent Engagement

Northfield Promise supported the Greenvale Park Community School throughout the 2021-22 school year. A total of 563 youth and 181 family members participated in programming, and 85 volunteers contributed time and resources. The community school was able to resume offering health programming, which included providing on-site dental cleanings and dental evaluations to 45 youth.

Mental Health & Social-Emotional Supports

Northfield Promise collaborated with Northfield Public Schools to offer Teen Mental Health First Aid training to more than 250 10th graders during the 2021-22 school year. Individuals trained reported referring more than 1,600 individuals to local community resources during the grant period.





TORCH's mission is to support and empower students in graduating from high school and pursuing future goals, with an intentional focus on partnering with students of color, youth from low-income families, and first-generation college attendees.



**18 Years
of Success
IN NORTHFIELD**

**98% High School
Graduation Rate
FOR TORCH STUDENTS**

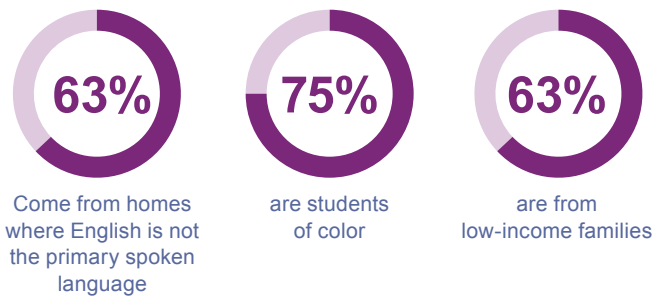
**739 TORCH
Graduates**

SINCE PROGRAM'S INCEPTION

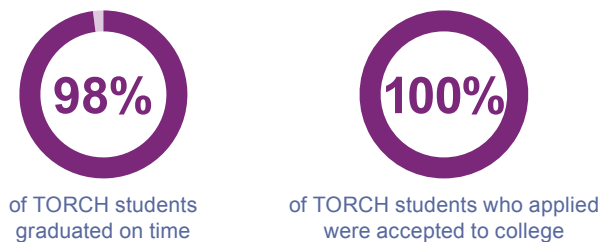
— 2022 STUDENT IMPACT —

175 high school graduates	289 high school students	152 middle school students
--	---------------------------------------	---

— TODAY'S TORCH STUDENTS —



— TORCH CLASS OF 2022 —





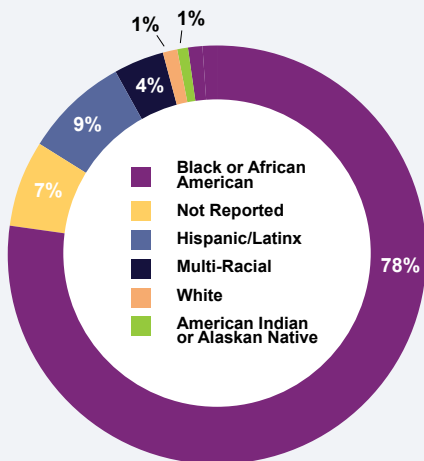
About Northside Achievement Zone (NAZ)

The mission of the Northside Achievement Zone (NAZ) is to end multi-generational poverty in North Minneapolis by building a culture of achievement in which all low-income children of color graduate high school ready for college and careers.

NAZ is a place-based collaborative made up of 30+ nonprofits and educational institutions to provide a continuum of support to Northside families and scholars. NAZ has a two-generation approach, working in tandem with families, their scholars, and a network of anchor partners to position children for school and life success. NAZ works to support the achievement goals of parents and scholars through prenatal care and early childhood education; K-12 academic and expanded learning supports; family coaching; housing, career, and financial assistance; parenting and empowerment classes; and mental and physical health programming.

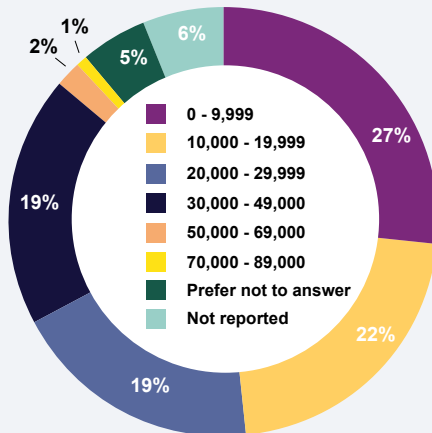
Who is NAZ?

92% of NAZ families are families of color



Race and Ethnicity

68% of NAZ families make less than \$30,000 a year



Income

NAZ By the Numbers

- **942** families
- **1,718** scholars
- **595** scholars enrolled in out-of-school time or other academic interventions
- **235** early childhood scholars enrolled in a quality learning center
- **192** families engaged in housing stability improvement planning



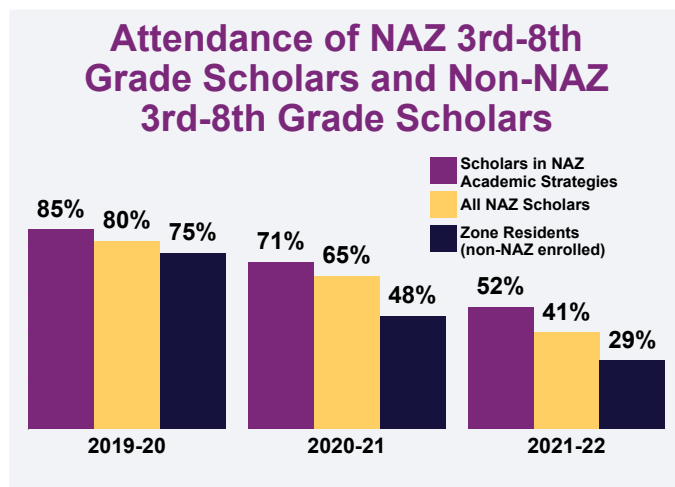
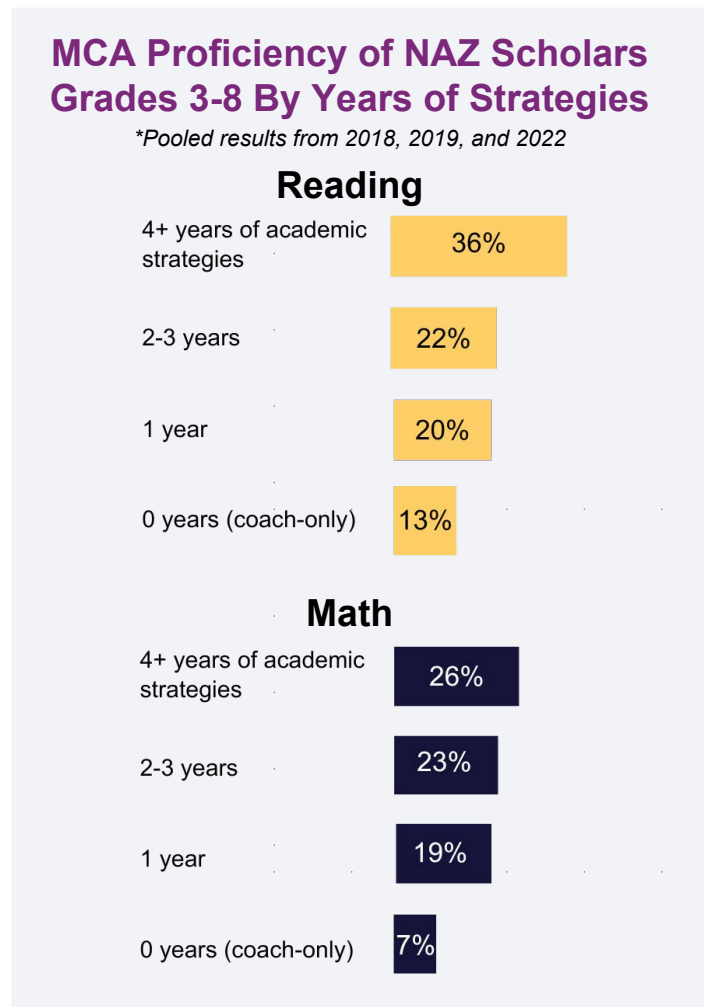
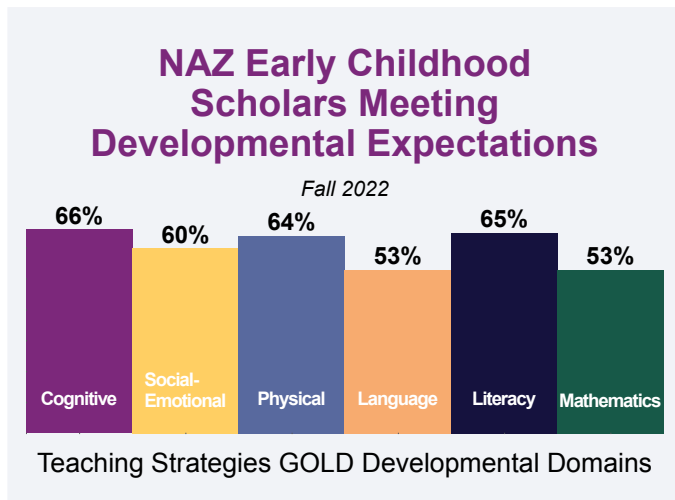


NAZ Results

NAZ completed the first year of its three-year strategic business plan focused on recovering and accelerating academic outcomes for North Minneapolis scholars. The plan also details the goal to double the number of families and scholars served while expanding what it knows works.

The last year has shown that scholars throughout Minnesota struggled to meet academic standards. Preliminary findings show that NAZ scholars struggled even more than their peers and yet saw the following results:

- Over half of NAZ early childhood scholars are meeting or exceeding developmental expectations.
- Longer engagement in NAZ leaders to better academic outcomes.
- NAZ 3rd-8th grade scholars have more consistent attendance than non-NAZ 3rd-8th grade scholars.



Note: One of NAZ's partner schools with a significant NAZ population not included in MCA reporting.

Moving Forward

In the face of many educational disruptions NAZ is continuing to innovate, listen to families and scholars, and to do whatever it takes to ensure they make progress toward their vision. NAZ will never give up on Minnesota or its children and families.



About Children First/Park Partnership for Success

Children First/Park Partnership for Success is a data-informed, cross-sector, cradle-to-career partnership focused on transforming systems to close the race, ethnicity, and poverty opportunity gaps so that all kids in St. Louis Park can realize their brilliance. Children First serves as the partnership's backbone support.

Access to High-Quality Early Childhood Care & Education

Children First/Park Partnership for Success targeted its efforts on increasing access to high-quality early childhood care and education. The partnership debuted a week-long Summer Reading Festival focused on equity to instill the joy of learning in families and children. This free community celebration had a special focus on groups who could benefit from additional learning opportunities and comprised 11 events hosted by 13 organizations and 21 community partners, engaging 2,388 community members in strategic neighborhoods. The event took learning and reading outdoors to public space, not just in the schools, and provided families with opportunities to connect and interact.

The partnership launched a free bilingual StoryTime in the Park program that included guest appearances by community partners and assistance enrolling for needed services such as free and reduced-price lunch. It doubled the number of slots available for summer preschool to ensure a safe, quality care environment and improved school readiness for children in St. Louis Park (SLP). It launched a childcare provider network for the SLP area to build community and increase access to quality care for families, interviewing providers at nine local centers to establish provider priorities, which were later affirmed by a broader group. Finally, the partnership facilitated the Central Clinic's governance to provide free drop-in medical and dental care for all children in SLP and Hopkins.

Parent Engagement

In 2022, Children First/Park Partnership for Success launched a Latinx parent engagement group focused on the families furthest from systems that prepare their children for success in kindergarten. Partnership staff led door-knocking campaigns in the city's densest public housing and found families who expressed feeling isolated from the community and who were eager to give their children early learning opportunities.

Once convened, parents analyzed early childhood data and developed strategies to improve outcomes. Partnership staff worked with parents to implement their strategies, including a bilingual summer StoryTime in the Park that built deep relationships among parents and community partners leading to ongoing parent volunteering and the creation of a new Spanish early childhood family education class and parent liaison position funded by SLP Public Schools. Parents continue to be at the center of the partnership's work.

SLP Summer Reading Festival



11

Free community events hosted by 13 organizations



21

Community partners



2,388

Community members participated



1,497

Books distributed



1,077

Backpacks, toys, school supplies, and more distributed



585

Hours of service provided by 142 volunteers



Mental Health & Social-Emotional Supports

Children First/Park Partnership for Success’s parent engagement strategies directly address family mental health and social-emotional status. Its weeklong Summer Reading Festival increases community connectivity, social interaction, and family activity levels.

As part of the SLP Mental Health Collaborative, Children First/Park Partnership for Success presented a comprehensive plan for investment in mental wellness, capacity building, and data infrastructure to the City for American Rescue Plan Act investment. In May, the partnership co-sponsored a citywide Youth Mental Health Panel facilitated by a St. Louis Park High School student in preparation for the release of the 2022 Minnesota Student Survey data on mental wellness.

The partnership also funded the work of SLP Public Schools summer Data Analyst Interns, who conducted research with SLP parents about their hopes for their children and their relationship with the schools. Children First/Park Partnership for Success recently kicked off its upper grades/postsecondary/career readiness efforts with two paid Youth Co-Chairs – local high school students working on the creation of a youth leadership group that will analyze and address youth mental health and wellness opportunities and challenges, along with other indicators of youth success and wellbeing.



StoryTime in the Park



29

Preschool-aged children participated in a high-quality Early Learning experience



16

Latinx families participated in a free, bilingual, weekly program



100%

of parents felt they benefited from participating



100%

of parents changed their behavior to engage in learning activities with their child as a result of participating in the program



About RiseUp Red Wing

RiseUp Red Wing (formerly Every Hand Joined and Red Wing Youth Outreach) is on a mission to ensure Red Wing offers abundant opportunities for all young people to unleash their potential. The partnership serves youth and families through caring, responsive programming, and we foster shared action among partners committed to supporting youth.

RiseUp Red Wing brings organizations and committed individuals together to foster a stronger Red Wing where every family and every young person can thrive. The partnership is working toward a community where government agencies, schools, individual community members, and parents and youth come together to identify challenges facing our youth and devise solutions collectively.

Academic Supports

RiseUp Red Wing provided resources to support student learning and experiences on a multitude of subjects.

- **The Red Wing College Promise:** Partners created and implemented a program that provides guaranteed access to a college education at Minnesota State College Southeast to every qualifying student graduating from a Red Wing public high school.
- **Driver's Ed:** Partners provided financial assistance to 14 students to complete driver's education and behind the wheel testing.
- **Transportation:** Partners provided free transportation to student interns, making internship opportunities accessible to more youth.

The partnership created opportunities for both students and educators to gain support in inclusive environments.

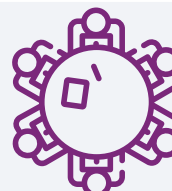
- **Tutoring:** Partners hosted 56 tutoring sessions for 17 Hispanic students at Red Wing High School, and 41 sessions for five middle school students.
- **Native American Cultural Training:** Partners hosted a Native American Cultural Training that was attended by educators across the country and became a go-to resource for K-20 professionals who desire to become more involved in teaching Native students. Training topics included understanding the needs of Native students, common mishaps in teaching Native students, contextualizing the disenfranchisement of Native students in the educational system, and best practices for building an inclusive classroom for Native students.
- **FAFSA/MN Dream Act Workshop:** Partners conducted a FAFSA/MN Dream Act workshop reaching 65 people, supporting supported eight senior students in applying for financial aid.

Tutoring for Latinx Students



56	FOR	17
Sessions		High Schoolers
41	FOR	5
Sessions		Middle Schoolers

FAFSA/MN DREAM Act



65
of people reached at workshop
8
of supported senior students in applying for financial aid



Parent Engagement

RiseUp Red Wing engaged families and caregivers in both early childhood supports and in services in their language of origin.

- **Follow Along:** The partnership enrolled 18 new children in the Follow Along program, which delivers childhood development evaluation forms to Red Wing parents and caregivers.
- **Early Intervention:** Through home visits, partners found that 87% of children who were identified to have developmental concerns were able to receive early intervention services and have enacted an implementation plan.
- **Spanish Access:** Partners provided access for 28 Hispanic/Latinx parents and children to Legal Services Education Law Advocacy Project.

Mental Health & Social-Emotional Supports

Beyond the classroom, RiseUp Red Wing partners worked to build environments in which youth and families feel valued and included in the community.

- **Mentoring:** RiseUp Red Wing connected 70 middle school and high school youth to mentors.
- **Group Therapy:** Partners hosted five group therapy sessions for Hispanic/Latinx families that serve 19 students and 17 parents.
- **Native American Student Inclusion:** The partnership provided the opportunity for Native American Student Association student members to attend the Native American Boarding School Exhibit at the Goodhue County History Center. They also provide opportunities for student members to cook weekly meals together and participate in Native American traditions.





About the Saint Paul Promise Neighborhood

Saint Paul Promise Neighborhood (SPPN) is an educational partnership that puts children in the Frogtown, Rondo, and Summit-University neighborhoods of Saint Paul on the pathway to college and career success. SPPN’s neighborhood boundaries focus on 250 blocks of Saint Paul.

Nearly half of families with children residing in the neighborhood live at or below the poverty threshold, with more than 90% of children attending SPPN partner schools participating in the free and reduced-price school lunch program. SPPN is also one of the most diverse neighborhoods in Saint Paul and the state: more than 70% of SPPN residents are people of color, compared with 17% statewide, and 30% of residents are foreign-born, compared with 8% statewide.

Academic Supports

Expanded Learning Opportunities

Saint Paul Promise Neighborhood (SPPN) works to close the opportunity gap permanently by ensuring scholars have a safe, supportive, and culturally relevant learning environment during the summer.

Project BOLD

SPPN launched Project BOLD to ensure that families are surrounded by sustainable support and have their ability to succeed amplified. Through this wraparound program, students and families have trusted partners to help them navigate choices, decisions, resources, and goals. Family Success Coaches help connect families to programs within Saint Paul Promise Neighborhood and throughout the city that put them on the path to create, implement, and achieve their cradle-to-career pursuits. Project BOLD considers the whole family and emphasizes a tailored-made life over “one size fits all.”

The People’s Fellowship

In 2022, Saint Paul Promise Neighborhood implemented three cohorts of The People’s Fellowship (TPF), a five-month journey for African-American families to build wealth for themselves, their families, and their community. Throughout, families learn how to boost income and gain tools to build wealth and assets for the future with culture at the center. TPF works with partner organizations to provide wraparound support and a two-generational approach to improve participants’ financial well-being.

Expanded Learning Opportunities Highlights



- SPPN and partners served over **800** children during the summer months to prevent summer slide
- **100%** of parents reported their children were more excited about school (from surveys from STEM Freedom school)
- **86%** of students maintained or improved their literacy skills

TPF Highlights



97%

of participants established or built a financial cushion in the form of financial savings

64%

of participants improved their credit scores

73%

of participants received and completed financial coaching that helped them develop plans for the future

\$40K

in emergency assistance provided by SPPN

Family Advocacy

Saint Paul Promise Neighborhood believes those most impacted by the barriers standing in the way of social and financial liberation are also most knowledgeable about what they can do to remove those barriers so everyone can thrive. Yet those who should have the most seats in decision-making spaces find themselves furthest from the resources, influence, and power to make systems change happen.

SPPN offers advocacy opportunities for Promise Neighborhood families so that together, all can dismantle inequities in exchange for real policy solutions. SPPN's advocacy work strives to spark families' inherent political power, invests in their capacity as self-advocates, and prepares them to act on opportunities through their influence as lived-experience policy experts.

Mental Health & Social-Emotional Supports

This past year, SPPN provided wraparound services for over 200 individuals through the People's Fellowship, Project BOLD, and Advocacy and Civic Engagement programs. The wraparound services were culturally responsive, targeted the whole family, and developed an ecosystem of support for families and scholars.

In partnership with Hallie Q. Brown, SPPN served over 225 households and over 600 children in the Promise Neighborhood with toys, coats, and food baskets. Saint Paul Promise Neighborhood provided over 150 snack packs and 100 uniforms to children at its anchor schools and over 500 backpacks and supplies for the 2022-23 school year.

Family Advocacy Highlights



- Secured **7** bill authors for HF2658/SF2804: Education partnership program funding to streamline programming, secure other funding sources, and provide a continuity of services to children and parents across the state
- Co-authored **8** letters alongside coalition members: In support of policies contributing to the success of the cradle-to-career ecosystem
- Contributed to the **11,283** individual contacts to legislators: Advocating for investments in early childhood education



100
Uniforms



500
Backpacks





About Partner For Student Success – The Education Initiative of United Way of Central Minnesota

Partner for Student Success is the education initiative of United Way of Central Minnesota, serving Benton, Sherburne, Stearns, and Wright counties. The partnership is a coalition of business, civic, and education partners that believe when children succeed, the community thrives. They unite to support young people from cradle to career, creating environments, opportunities, and collaborations so each child in the community has what is needed to succeed in school and life. The initiative invests and aligns over \$2 million in community and grant-raised funds to support children and families through a data-informed process to have the greatest collective impact across the community.

Academic Supports

- The partnership supported St. Cloud Rotary's Preschool 4 Success, providing 96 St. Cloud Area School District preschoolers access high-quality learning opportunities.
- Partner for Student Success supported 15 out-of-school programs, as well as providing literacy opportunities to readers at their own levels, increasing skills.
- The partnership developed a program centered on literacy opportunities that highlights positive identity for Black youth.
- Partner for Student Success supported Exploring Potential Interests and Careers (EPIC). This initiative engaged 4,200 students from 29 schools, as well as 130 businesses and partners, in hands-on career exploration activities.
- The partnership provided support for Dolly Parton's Imagination Library program, in which 4,679 local children, birth through age five, receive a book each month.

Exploring Potential Interests and Careers (EPIC)



4,200

students

29

schools

130

businesses and partners





Parent Engagement

- **Support for Parent Power Sessions:** Partner for Student Success provides caregivers and adults support and engagement so that parents who speak a language other than English at home can engage in literacy activities for early learners.
- **Support for CommuniTea:** This grassroots and community-led advocacy and civic engagement group has connected 20 families with education leaders and community leaders.
- **Home Learning Kits:** The partnership distributed 150 Network for the Development of Children of African Descent (NdCAD) home learning kits. These family- and culturally-centered activities build skills, nurture self-confidence, and promote curiosity and engagement
- **Ellison Center Partnership:** 50 adults participated in Circle of Security education sessions. These include responsive parenting practices for caregivers and are conducted in several languages and across the community.

Mental Health & Social-Emotional Supports

- **Funding for the St. Cloud Area Child Response Initiative:** 45 youth received rapid-response mental health services, based on financial need. Law enforcement provided on-the-scene mental health trauma care to 387 children and their families.
- **Kindergarten Support:** 187 St. Cloud Area School District kindergartners received mental health support.
- **Youth Forum:** 70 people from diverse backgrounds across the St. Cloud region attended a Youth Mental Health forum and identified mental health needs within the community.



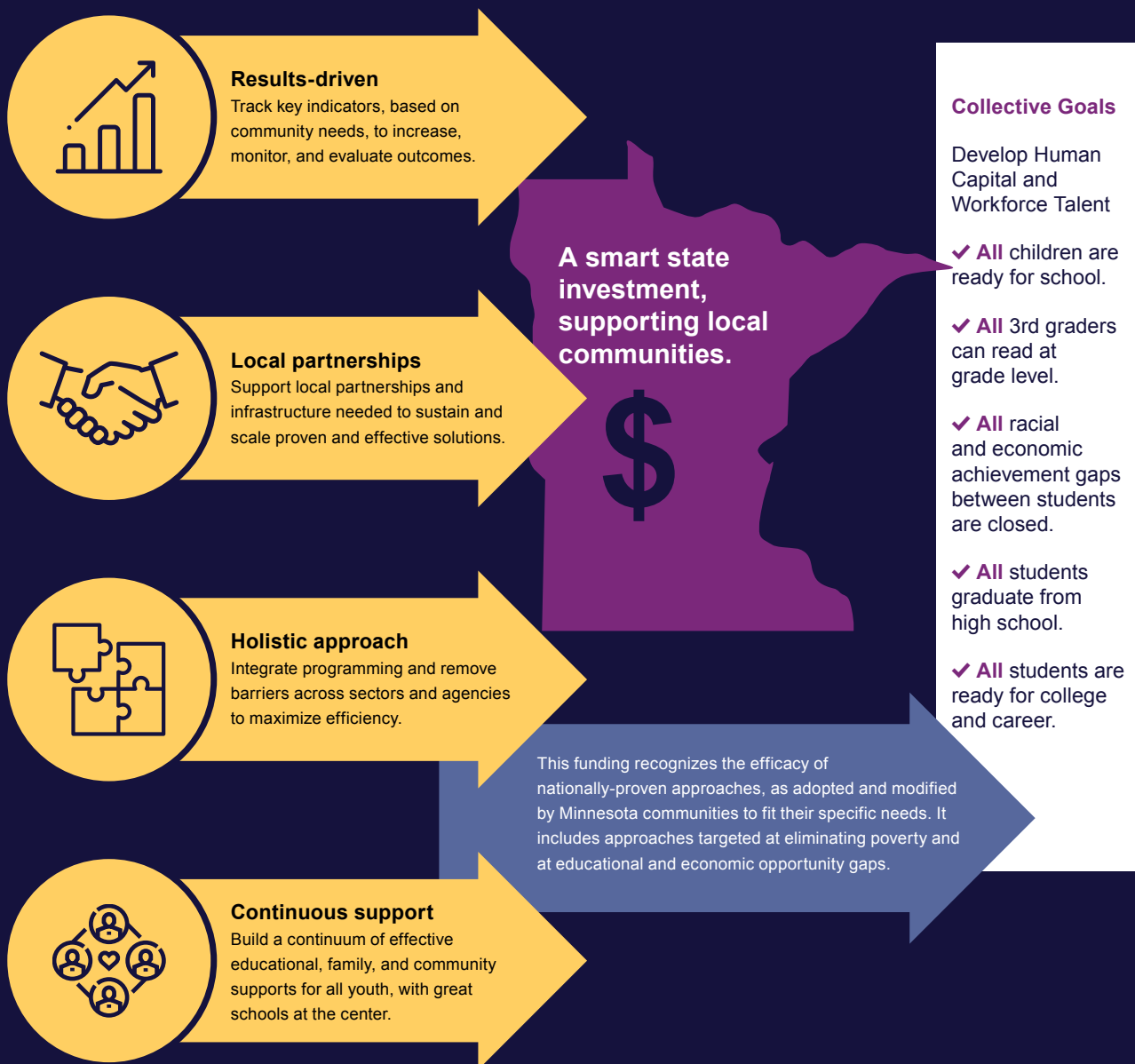
187

St. Cloud Area
School District
kindergartners
receive mental
health support.

Education Partnerships Fund

Aligning Efforts. Multiplying Impact.

Establishing a statewide network of comprehensive educational partnerships that emphasize local solutions and results-based accountability to close the opportunity gap.





Thank you for supporting the Education Partnerships Coalition (EPC) to help youth and families across the state thrive.

While the EPC has accomplished so much with your support, there are more children and families in need.

The EPC looks forward to continuing to work with you to eliminate Minnesota’s opportunity gaps!

This report fulfills the requirements outlined in Minnesota Statutes 2021, section 124D.99; subdivision 6.





**Education
Partnerships
Coalition**
Minnesota

